

YUMIE

the **YUM** Interface for **E**nd-users

Lewis Rosenthal, CNA, CLE, CLP, CWNP
Managing Member
Arca Noae, LLC

Project Vitals

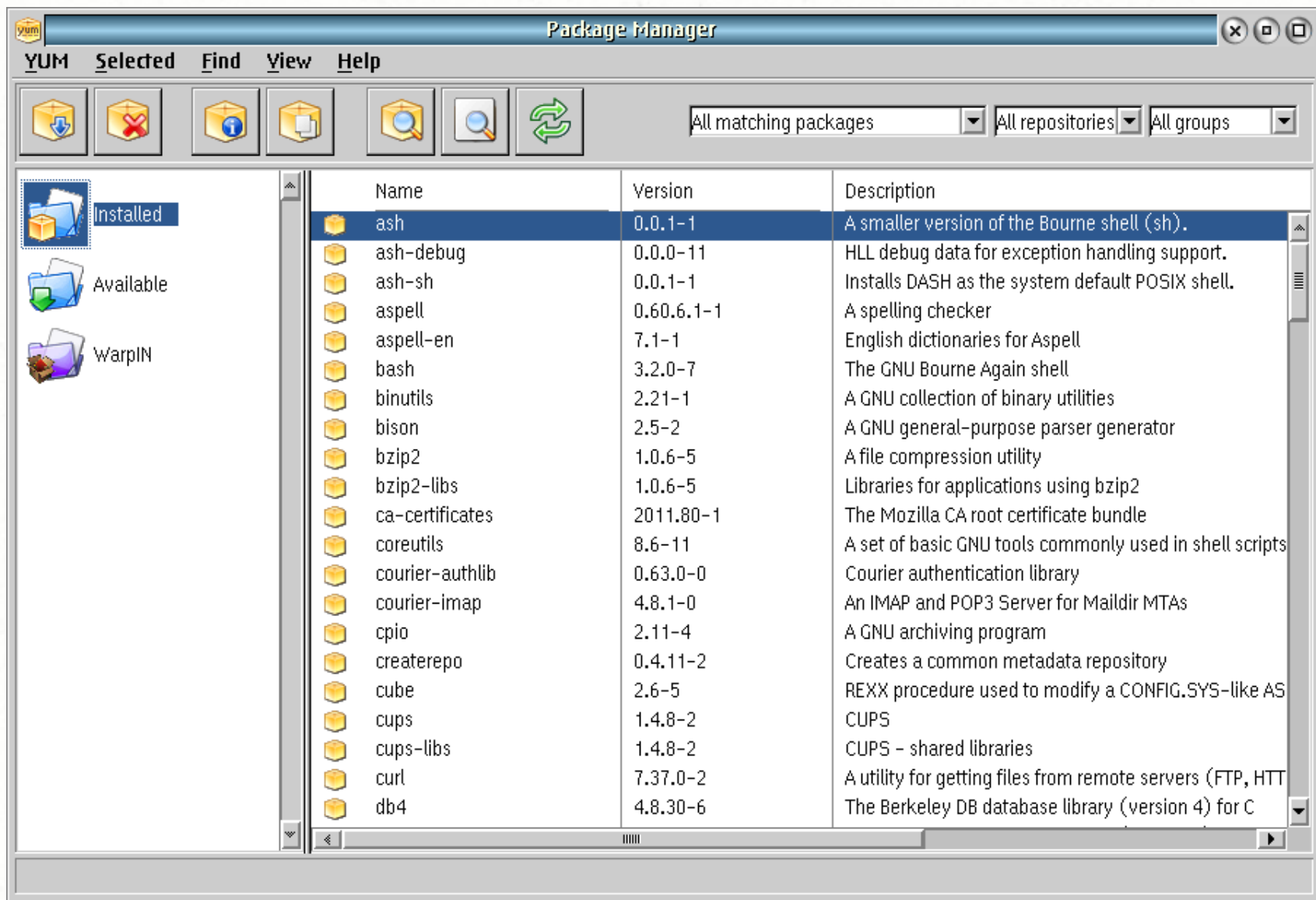
- Alex Taylor is Technical Lead
- All code GPL
- NLS-capable
- Accepts custom branding
- Useful to all OS/2 users, not just Arca Noae subscribers

UI Features

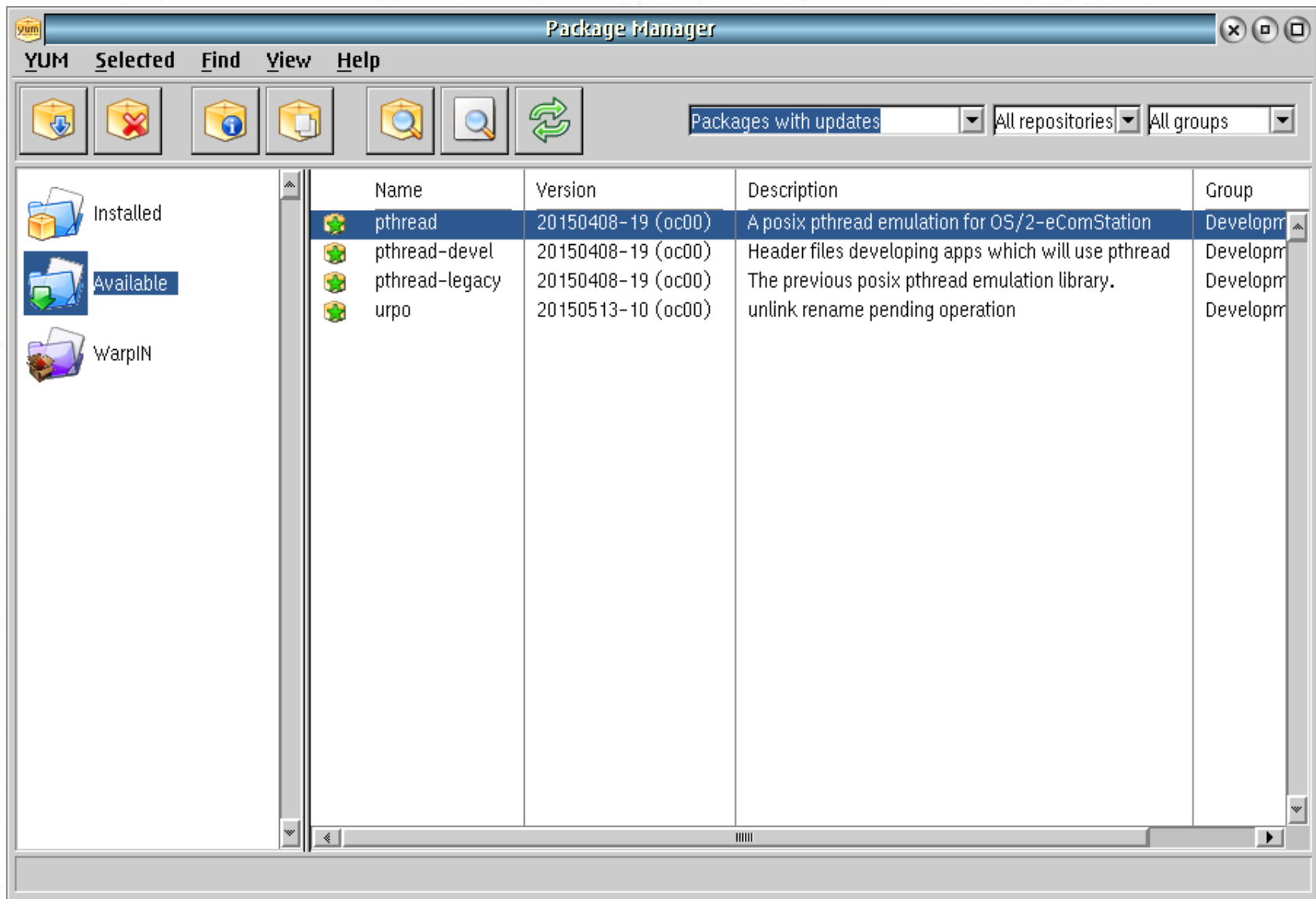
- Ability to filter package lists
- Tooltips (flyover help)
- Status icons (installed, update available, new, rpm, Warpln)
- Progress bars

Back End Features

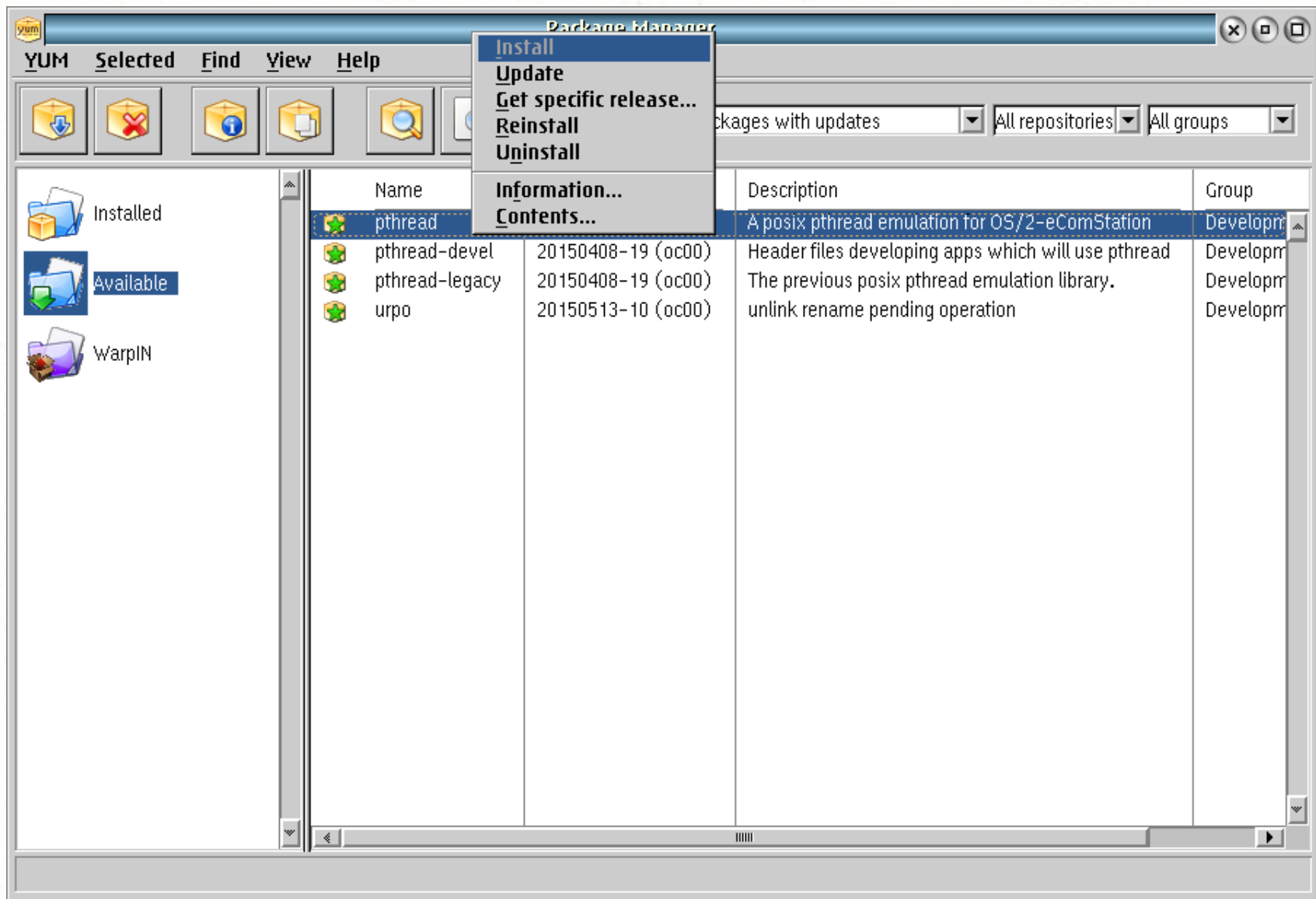
- Mainly Python and REXX
- Small memory footprint
- Low disk space consumption
- Compatible with Warp 4 and above
- Standard and verbose logging



YUMIE - Installed packages



YUMIE - Available packages with updates



YUMIE - Context menu

Select Version

The following releases are available:

Name	Version	Platform	Repository	Installed Package	Available A
pthread	20120924-11.oc00	i686	netlabs-rel	pthread-20150408-18.oc00.pentium4	Downgr
pthread	20120924-11.oc00	pentium4	netlabs-rel	pthread-20150408-18.oc00.pentium4	Downgr
pthread	20131117-12.oc00	i686	netlabs-rel	pthread-20150408-18.oc00.pentium4	Downgr
pthread	20131117-12.oc00	pentium4	netlabs-rel	pthread-20150408-18.oc00.pentium4	Downgr
pthread	20140226-13.oc00	i686	netlabs-rel	pthread-20150408-18.oc00.pentium4	Downgr
pthread	20140226-13.oc00	pentium4	netlabs-rel	pthread-20150408-18.oc00.pentium4	Downgr
pthread	20140423-14.oc00	i686	netlabs-rel	pthread-20150408-18.oc00.pentium4	Downgr
pthread	20140423-14.oc00	pentium4	netlabs-rel	pthread-20150408-18.oc00.pentium4	Downgr
pthread	20140425-15.oc00	i686	netlabs-rel	pthread-20150408-18.oc00.pentium4	Downgr
pthread	20140425-15.oc00	pentium4	netlabs-rel	pthread-20150408-18.oc00.pentium4	Downgr
pthread	20140814-16.oc00	i686	netlabs-rel	pthread-20150408-18.oc00.pentium4	Downgr
pthread	20140814-16.oc00	pentium4	netlabs-rel	pthread-20150408-18.oc00.pentium4	Downgr
pthread	20150327-17.oc00	i386	netlabs-rel	pthread-20150408-18.oc00.pentium4	Downgr
pthread	20150327-17.oc00	i686	netlabs-rel	pthread-20150408-18.oc00.pentium4	Downgr

YUMIE - Get specific release (older versions at top of list)

Select Version

The following releases are available:

Name	Version	Platform	Repository	Installed Package	Available A
pthread	20140226-13.oc00	i686	netlabs-rel	pthread-20150408-18.oc00.pentium4	Downgr
pthread	20140226-13.oc00	pentium4	netlabs-rel	pthread-20150408-18.oc00.pentium4	Downgr
pthread	20140423-14.oc00	i686	netlabs-rel	pthread-20150408-18.oc00.pentium4	Downgr
pthread	20140423-14.oc00	pentium4	netlabs-rel	pthread-20150408-18.oc00.pentium4	Downgr
pthread	20140425-15.oc00	i686	netlabs-rel	pthread-20150408-18.oc00.pentium4	Downgr
pthread	20140425-15.oc00	pentium4	netlabs-rel	pthread-20150408-18.oc00.pentium4	Downgr
pthread	20140814-16.oc00	i686	netlabs-rel	pthread-20150408-18.oc00.pentium4	Downgr
pthread	20140814-16.oc00	pentium4	netlabs-rel	pthread-20150408-18.oc00.pentium4	Downgr
pthread	20150327-17.oc00	i386	netlabs-rel	pthread-20150408-18.oc00.pentium4	Downgr
pthread	20150327-17.oc00	i686	netlabs-rel	pthread-20150408-18.oc00.pentium4	Downgr
pthread	20150327-17.oc00	pentium4	netlabs-rel	pthread-20150408-18.oc00.pentium4	Downgr
pthread	20150408-19.oc00	i386	netlabs-rel	pthread-20150408-18.oc00.pentium4	Update
pthread	20150408-19.oc00	i686	netlabs-rel	pthread-20150408-18.oc00.pentium4	Update
pthread	20150408-19.oc00	pentium4	netlabs-rel	pthread-20150408-18.oc00.pentium4	Update

YUMIE - Get specific release (newer versions at bottom of list)

Repository Management

- List configured repositories
- Add/Edit/Delete repositories
- Enable/Disable repositories
- Configure authenticated repositories
- Securely store repo credentials

The screenshot shows a window titled "Manage YUM Repositories" with a YUM logo in the top-left corner. The window contains a table with the following data:

Repository	Description	Status	URI	Configuration File
netlabs-exp	Netlabs experimental repository 00 - i386	Enabled	http://rpm.netlabs.org/experimental/00/i386/	C:\etc\yum
netlabs-rel	Netlabs Stable Repository 00 - i386	Enabled	http://rpm.netlabs.org/release/00/i386/	C:\etc\yum

Add Repository

Name:
arcanoae-rel

Description:
Arca Noae Stable Repository - \$releasever - \$basearch

URI:
[https://repos.arcanoae.com/experimental/\\$releasever/\\$basearch/](https://repos.arcanoae.com/experimental/$releasever/$basearch/)

Secure repository (requires authentication)

Save Cancel

Secure Repository

The repository "arcanae-rel" requires authorization to access. Please enter your user name and password below, or select "Cancel" to disable this repository.

User name:

Password:

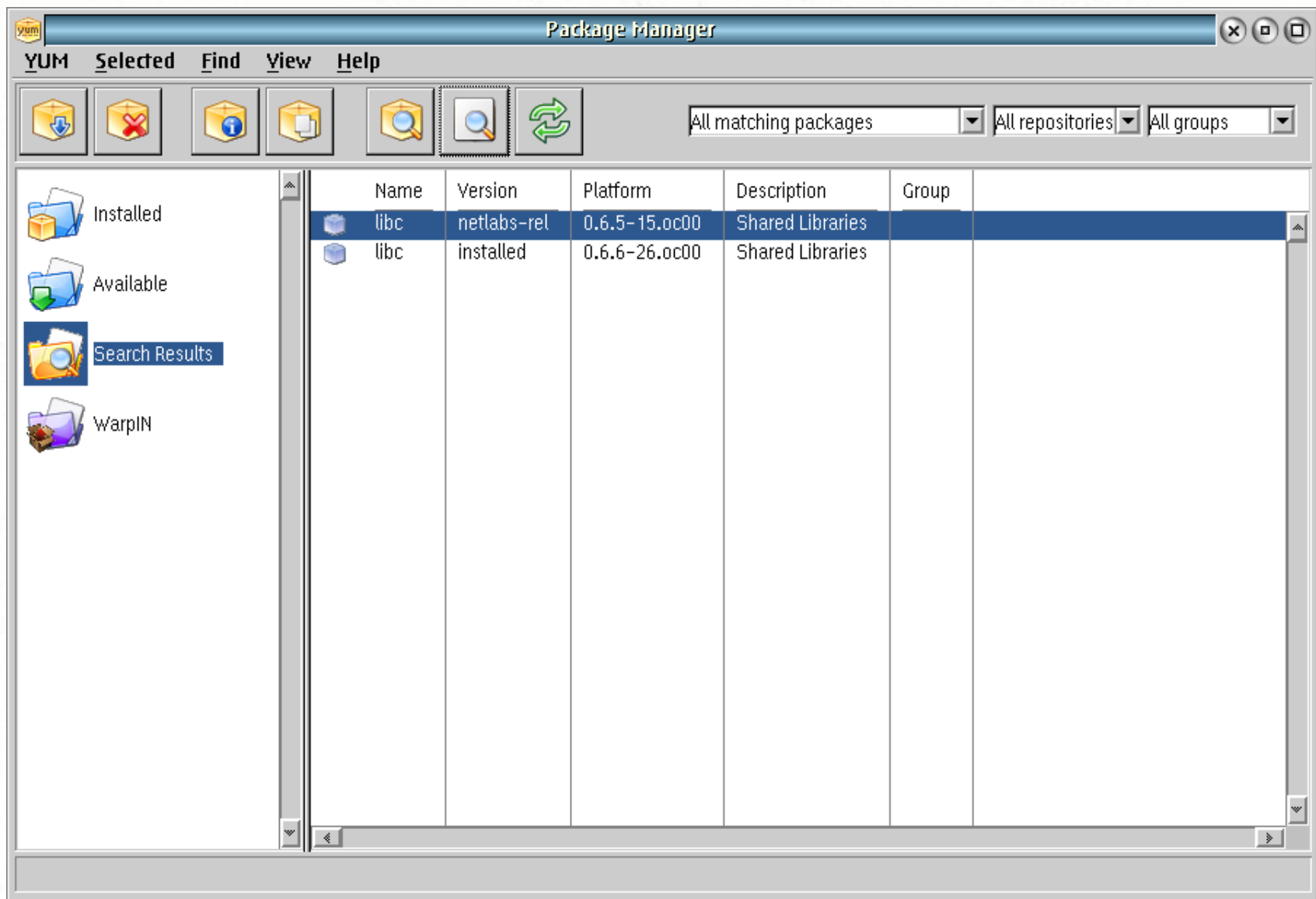
Find, Contents, Info

- Find packages by (partial/wildcard) package name or included filename
- View package contents
- View package info

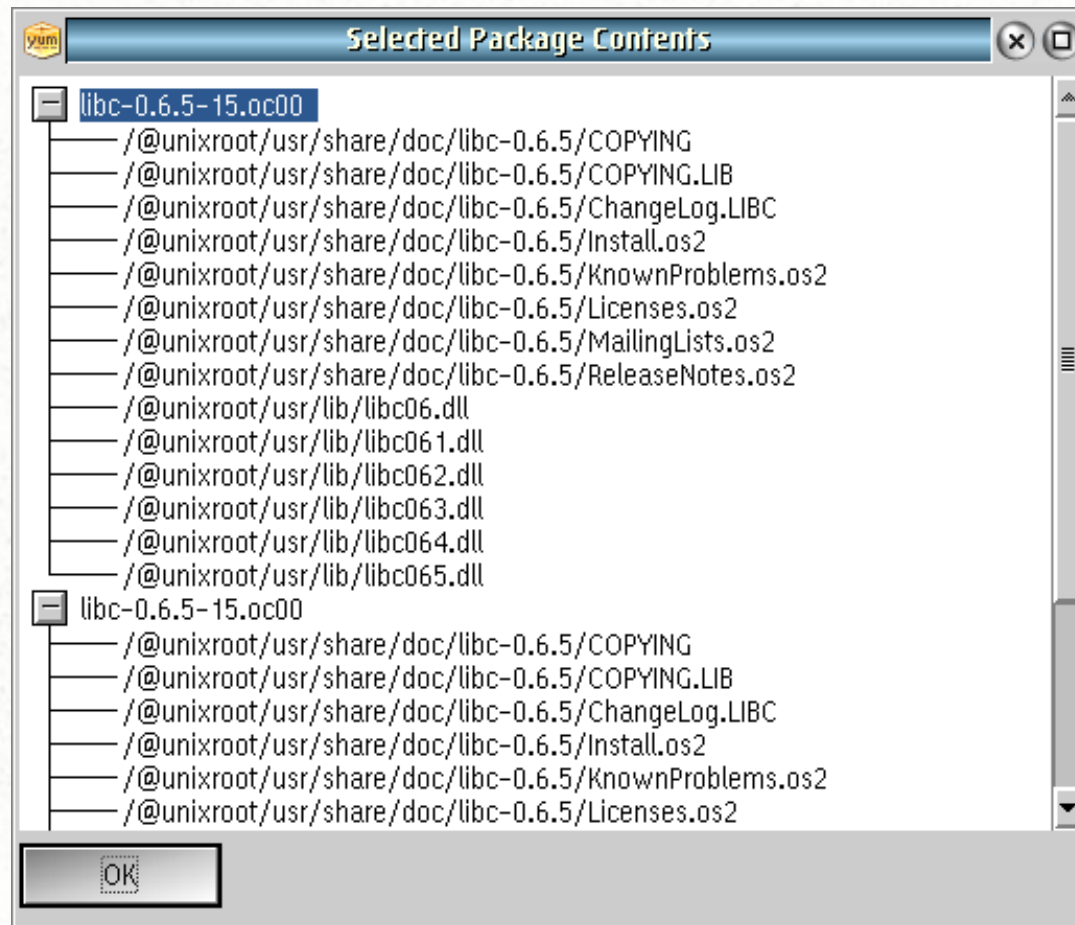
Find File

Search for package(s) containing:

Note: Search text is case-sensitive. It may be necessary to prefix the string with "*" in order to match filenames successfully.



YUMIE - Search results



Package Details

libc

Standard Shared Libraries

(System/Libraries)

Version: 0.6.6
Release: 26.oc00
Architecture: i386

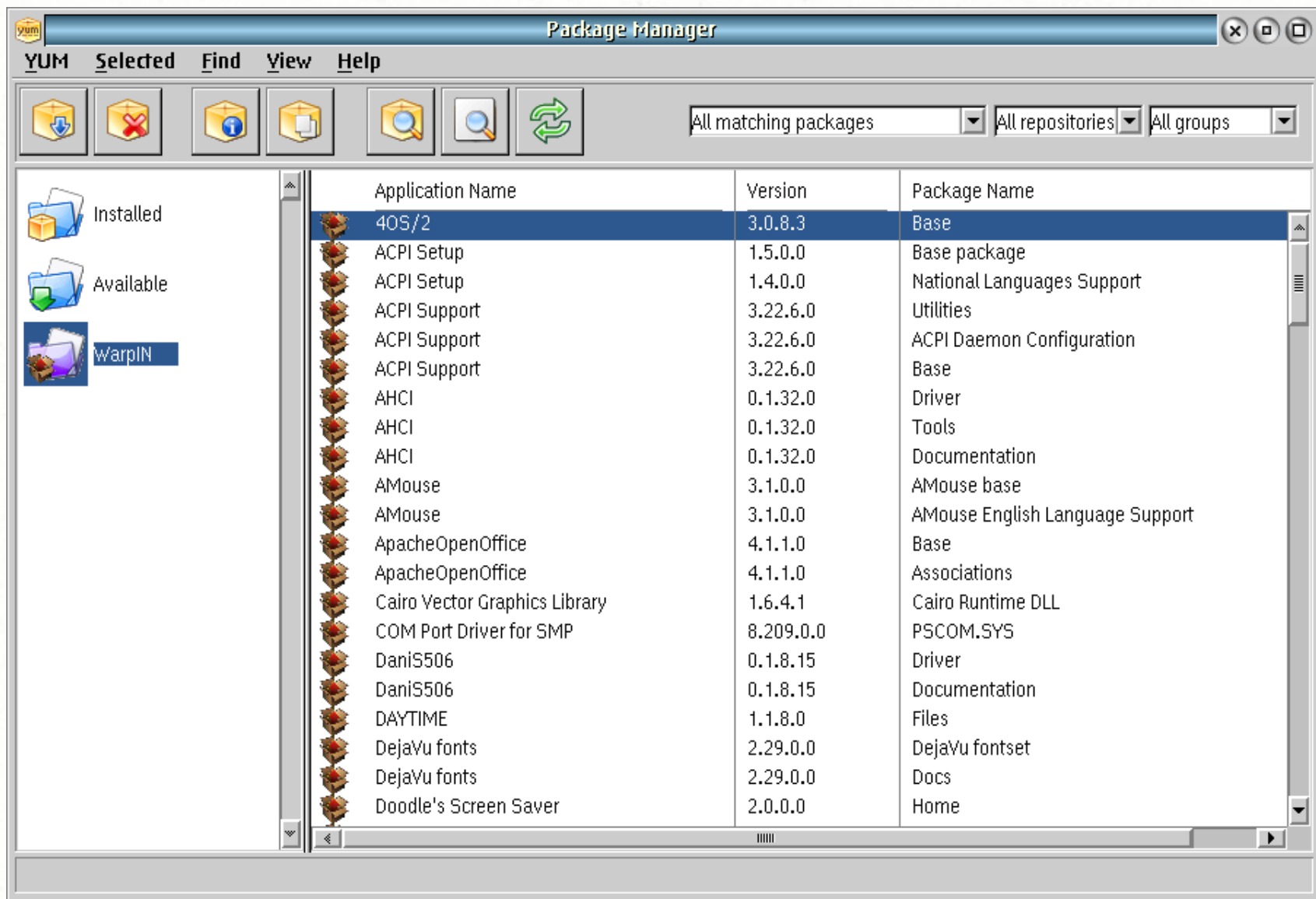
Size: 2.12 MB
Status: installed
Install time: Sun Feb 15 03:28:48 2015
From repository: netlabs-rel
URL: <http://svn.netlabs.org/libc>
License: BSD; GPL v2 or later; LGPL v2.1 or later

KLIBC is a C runtime library in which the coder is exploring The Single Unix Specification (SUS) and various *BSD, Sun and Linux interfaces used in 'portable' software. While implementing SUS completely and providing a great range of special BSD, Sun and Linux APIs is a kind of ultimate goal, the main focus is on what is interesting to play with and what is requested by porters using KLIBC.

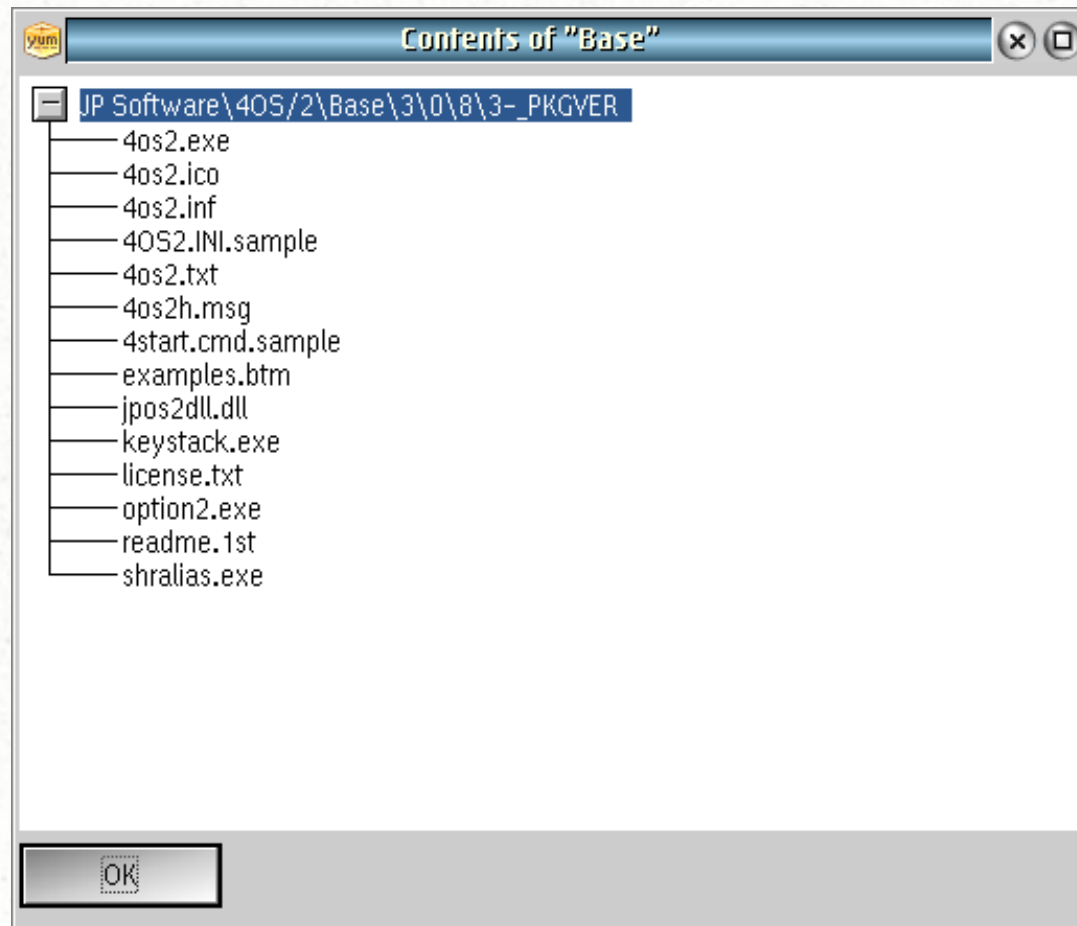
Close

Warpln

- Support for new Warpln repositories
- Manage Warpln packages just like rpms, including find, view contents, view details, install, remove, update, upgrade



YUMIE - WarpIn packages



Package Details

JP Software\40S/2\Base\3\0\8\3

This package contains the 40S/2 Base Package.

ConfigSysAttrs	SET PATH=\$ (1); ADDRIGHT SET DPATH=\$ (1); ADDRIGHT SET HELP=\$ (1); ADDRIGHT SET BOOKSHELF=\$ (1); ADDRIGHT LIBPATH=\$ (1); ADDRIGHT
ConfigSysDone	NWP SET PATH=C:\TOOLS\40S2; NWP SET DPATH=C:\TOOLS\40S2; NWP SET HELP=C:\TOOLS\40S2; NWP SET BOOKSHELF=C:\TOOLS\40S2; NWP LIBPATH=C:\TOOLS\40S2;
WPSObjectAttrs	REPLACE WPFolder 40S/2 <WP_APPS_FOLDER> OBJECTID=<WP_40S2FOLDER> REPLACE WPPProgram 40S/2 (window) <WP_40S2FOLDER> OBJECTID=<WP_40S2WIN>;EXENA REPLACE WPPProgram 40S/2 (Full screen) <WP_40S2FOLDER> OBJECTID=<WP_40S2FS>;EXENA REPLACE WPSHADOW 40S/2 (window) <WP_PROMPTS> SHADOWID=<WP_40S2WIN>;OBJECTID=<WP_40S2WIN> REPLACE WPSHADOW 40S/2 (Full screen) <WP_PROMPTS> SHADOWID=<WP_40S2FS>;OBJECTID=<WP_40S2FS> REPLACE WPPProgram 40S/2 Manual <WP_40S2FOLDER> OBJECTID=<WP_40S2MANUAL>;EXENA
WPSObjectDone	<WP_40S2FOLDER> <WP_40S2WIN> <WP_40S2FS> <SHADOW_40S2WIN>

Close

YUMIE - WarpIn package details

NLS

Translators currently working on:

- English
- Dutch
- German
- French
- Hungarian
- Portuguese
- Italian
- Spanish
- Korean
- Japanese
- Norwegian
- Finnish

Working Today (0.80)

- YUM repo management (aside from authentication)
- YUM features, as planned for GA (install, remove, update, find, etc.)
- Essentially, a working tool

To-Do Before 1.0

- Debug authenticated repo creation
- Warpln repo framework
- Warpln install/uninstall
- Update translations
- Help & documentation

Acknowledgments

- Alex Taylor
- Paul Ratcliffe (Warpln stuff)
- Steve Levine (input, dmidecode thoughts)
- Andy Willis (dmidecode 2.12)
- Veit Kannegieser (dmidecode 2.10)

Acknowledgments

- Trever Hemsley (dmios2)
- Beta Test Team
- Translators
- Yuri Dario (for taking me seriously during my Python tests and fixing a number of otherwise-trivial issues I raised)

Acknowledgments

- Lots of people I've unintentionally omitted, due to too many things in my head at once

Questions?